



Electronic Resource Associates, LLC

The latest in GPS location monitoring technology and a fully integrated part of the SCRAM Systems suite of products.

Consolidated on a single platform

SCRAM Continuous Alcohol Monitoring®

Continuous Alcohol Monitoring (CAM), or combined CAM + House Arrest, at the flip of a switch. It's 24/7 monitoring for your high-risk/high-need alcohol clients.

SCRAM Remote Breath®

The first and only handheld, wireless, portable breath alcohol device with automated facial recognition and GPS with every single test. For your lower-risk clients or those who need or have earned less intensive monitoring.

SCRAM GPS®

A one-piece GPS tracking bracelet that combines superior location accuracy with industry-leading battery life and tamper detection. SCRAM GPS Analytics provides essential insights into offender behavioral patterns and caseload trends.

SCRAM House Arrest®

Standalone house arrest monitoring built to work with today's home communications systems. Operates over Internet routers, standard or digital phone lines, DSL, Vonage®, or an optional SCRAM-provided wireless system.

SCRAM Systems Program Management Center™

The SCRAMNET® secure web application is the core of the Project Management Center (PMC), which brings together everything from monitoring of our entire product line to our best-in-industry court support program, 24/7 customer support, mobile applications, client compliance analytics, and beyond.

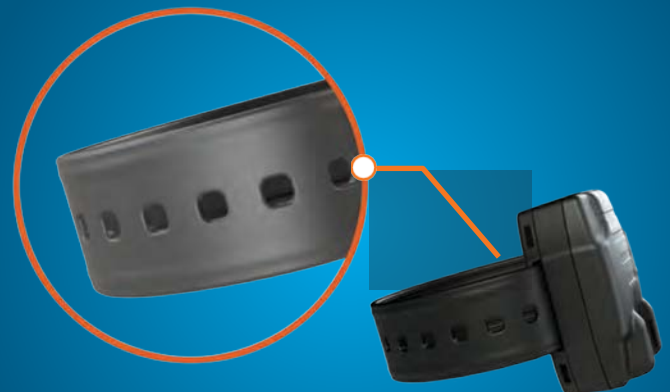


Open Strap, Closed Strap. There is Nothing in Between.

SCRAM GPS uses a strap design that is different from other GPS products, essentially eliminating intermittent strap disruptions that are responsible for the system-imposed grace periods required to manage false alerts in other GPS technologies.

The detection of removal is nearly instantaneous with SCRAM GPS. An OPEN alert means an OPEN strap. **No waiting, no guessing, no reason to doubt.**

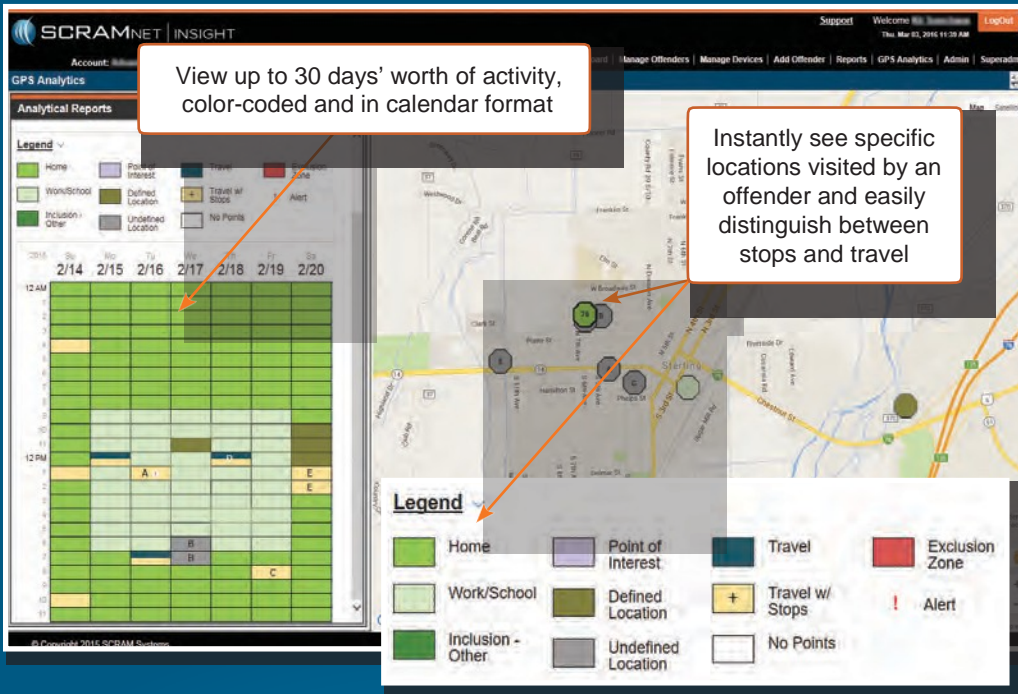
- No grace periods.
- No wait times.
- No confusion between "alerts" and "events."



▶ Eliminating “Needle in a Haystack” Monitoring

All GPS devices provide data, but how do you get from data to actionable information?

SCRAM GPS Analytics transforms up to 30 days of GPS data into easy-to-view, usable information to make sense of offender movements and spot trends or problems. It's smarter monitoring to help programs effectively and efficiently manage their caseload.



▶ FEATURES

- 50+ hours of battery life
- 3G cellular network
- Slim one-piece design
- Industry-leading, cut-free strap design
- Reliable GPS and A-GPS location technology
- Secondary location tracking via cell tower triangulation and location-based services (LBS)
- 2-way client communication
- On-board zone storage
- Customizable alert notices
- RF Base Station
- 30-second, tool-free installation

▶ BENEFITS

- Revolutionary strap design and tamper technology substantially reduce false alerts
- Save time by quickly identifying client travel patterns and stops with GPS Analytics and Google street-view mapping
- Shared Locations reporting shows clients who visit the same locations at the same time (association restrictions) or at different times (drop locations)
- Track and communicate with clients 24/7
- On-demand Pursuit Mode automatically provides GPS points every 15 seconds in near real-time to aid client apprehension
- Manage alerts and clients any time, anywhere with the SCRAM Systems mobile app

